

Zhejiang UN Forklift Co.,Ltd.

Address: NO.1, Road One, Xindeng New District, Fuyang,  
Hangzhou, Zhejiang 311404, China

Tel: +86-571-86888377/87565705/86888355/86888388

Fax: +86-571-86888399

E-mail: info@unforklift.com

Parts Inquiry: parts@unforklift.com

[www.unforklift.com](http://www.unforklift.com)



The International  
UN Team



[unforklift.com](http://unforklift.com)

UN FORKLIFT

## N Series Forklift Truck

1.5-3.5 Ton Diesel Forklift

1.5-3.5 Ton Gasoline / LPG Forklift



# Reliability

**10%** **Steering System**  
The hydraulic steering system reduces the loss of hydraulic and improves energy efficiency.

**25%** **Lifting & Driving System**  
The unique hydraulic technology increases lifting speed 25% and improves the driving speed.



## Excellent hydraulic system shows great performance in all aspects below.

- Uses a load-sensing flow control valve for steering to reduce horsepower loss and heat buildup.
- The main hydraulic valve incorporates adjustable flow controls for tilt and auxiliary functions.
- Allows for easy addition of extra functions and simplifies service.
- Controlled lowering speed independent of load speed.

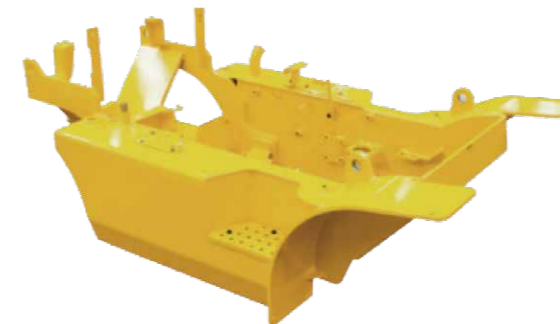
# Rugged Engine and Optimal Performance



Reaches

EPA Tier IV  
EURO III A/B

Market approved quality of Yanmar, Mitsubishi, Isuzu original engines ensure incomparable performance, durability and excellent fuel efficiency.



### Heavy Duty One-Piece Truck Frame

Heavy duty one-piece truck frame, with its welded and formed steel plate design, protects it from impact damage and extends truck's lift span.



### New Designed Radiator

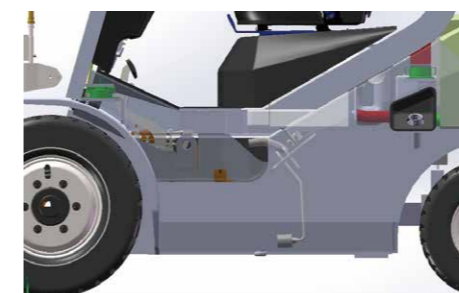
The new downsize water room of radiator reduces thickness of water conduits and extends wave length to increase ventilation and air flow rates.



### Multifunctional Dashboard

The newly designed dashboard is installed with larger screen and constant status is noticeable.

Reposition of hydraulic pipelines around the fuel tank and the enhanced cooling system increase ventilation, and make it easier to keep the high temperature of engine and oil in control, even in the harshest working environments.

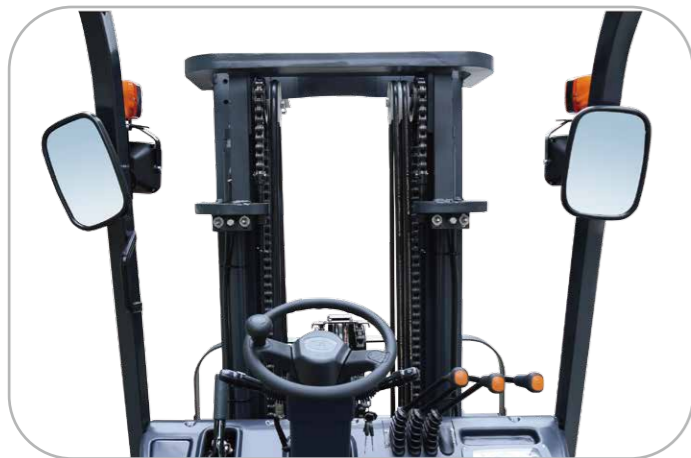


# Advanced Safety



## Strong Overhead Guard

Exceeding CE or ANSI regulations, the overhead guard offers optimal protection combined with excellent all-around visibility and reduces potential danger.



## Excellent Visibility for Safe Operation

Optimized lift cylinder arrangement provides operator with wider visibility, the panoramic mirror expands the driver's view when backing up.



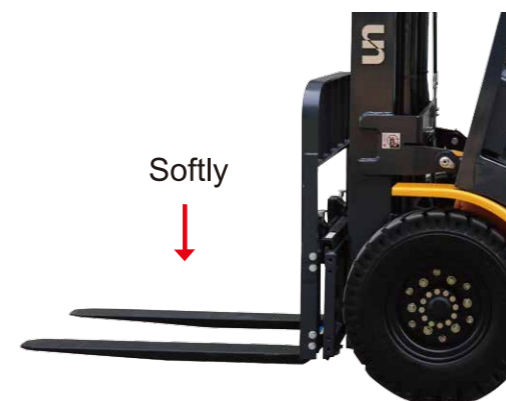
## Parking Brake

Toggle type parking brake requires less effort from the operator to set.



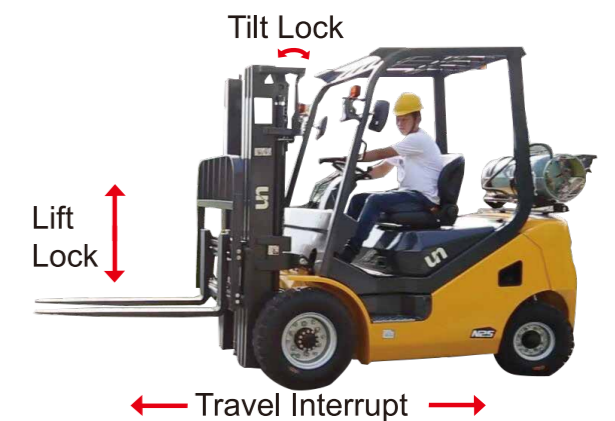
## Fork Safety Features

When the forks are being lowered, a down-control valve maintains the controlled speed. The down-safety valve prevents forks from dropping down in case of sudden damage of hydraulic line.



## OPS Operator Presence Sensor (Optional)

This comprehensive safety system includes a seat-actuated power interrupt with mast-lock, automatically preventing lift and tilt operations if the operator leaves the seat.



# Optimized Ergonomics



## The Latest Anti-Vibration and Shock Absorbing System

The anti-vibration rubber is installed between the guard and truck frame to reduce the source of vibration and noise while driving. This will not only reduce operator's fatigue but will also increase safety.



## Steering Adjuster

To achieve a comfortable drive position, the angle of the steering column can easily be adjusted. The steering wheel can be adjusted by a lever on the left-hand side to improve operator's comfort.



## Superior Comfort from Suspension Design

The suspension cab and seat design reduces travel vibration by 30%, so the operator feels less fatigue and greater comfort during the operations.



## Steering Wheel



## Ergonomically Positioned Pedals

Based on human engineering, the accelerator, brake and inching pedals are optimally positioned for operator's convenience and reduce operator's fatigue.



## Fuel Cap

Manufactured from durable, long life materials and made for proper sealing and venting.



## Switch and buzzer

Hazard lights switch and reverse buzzer



## Lower Entrance Height

The lower entrance height ensures easy and safe access for the operator. Wide open step offers convenience and safety when entering and exiting truck.



## Comfortable Seat

Great comfort is offered to the driver by a suspension seat with weight adjuster.



## Engine Hood

Secure your engine bay and fasten the vehicle hood not to be lifted.

# Fast and Easy Maintenance



## Easy Gas Tank Change

The LPG cylinder is easily installed and the swing down bracket makes the operator remove the tank in a lower position with minimal effort.



## Easy Maintenance Oil Check

The T/M oil level can be checked easily without any disassembly.



## Wide Opening Engine Hood

Easily accessible engine compartment assures fast and efficient maintenance.

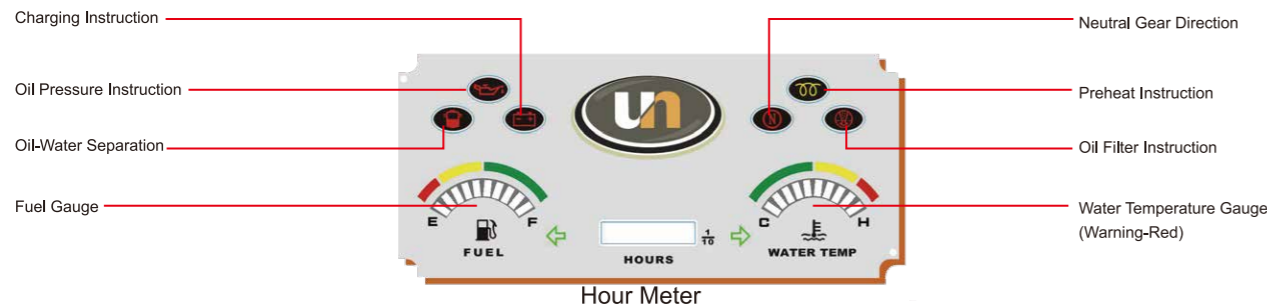


## Easy Change of Air Cleaner

The air filter is readily accessible for cleaning or replacement.

## Quick and Easy Engine Oil Check

The meter and warning indicator panels provide vital and operational data that include.



## 1.5-1.8 TON MAST SPECIFICATIONS & RATED CAPACITIES

Mast Type	Mast Name	Max.Fork Height(mm)	Load Capacity(kg)		Overall Height (mm)			Free Lift (mm)		Tilt Angle (Single)	Tilt Angle (Double)
					Lowered	Extended		Without Backrest	With Bracket		
						Without Backrest	With Backrest				
			1.5t	1.8t	1.5t/1.8t		1.5t/1.8t				
Wide View Mast	M300	3000	1500	1800	2025	3575	4055	100	100	6-12	6-12
	M330	3300	1500	1800	2175	3875	4355	100	100	6-12	6-12
	M400	4000	1500	1750	2575	4575	5055	100	100	6-6	*6-12
	M450	4500	1250	1550	2825	5075	5555	100	100	6-6	*6-12
	M470	4700	1100	1400	2925	5275	5755	100	100	6-6	*6-12
2-Stage Full Free Wide View Mast	M500	5000	950	1050	3125	5575	6055	100	100	6-6	*6-6
	FM300	3000	1500	1800	2025	3570	4050	1460	980	6-12	*6-12
	FM330	3300	1500	1800	2175	3920	4400	1610	1130	6-12	*6-12
	FM400	4000	1500	1800	2625	4570	5050	2000	1580	6-6	*6-12
	TFM400	4000	1500	1800	1925	4570	5035	1300	900	6-6	*6-6
3-Stage Full Free Wide View Mast	TFM450	4500	1200	1500	2075	5070	5535	1500	1050	6-6	*6-6
	TFM470	4700	1180	1400	2125	5270	5735	1565	1100	6-6	*6-6
	TFM500	5000	900	1200	2225	5570	6035	1665	1200	6-6	*6-6
	TFM550	5500	800	1000	2425	6070	6535	1800	1400	3-6	*3-6
	TFM600	6000	600	700	2625	6570	7035	2000	1600	3-6	*3-6

Note: With Separated Side shifter, load capacity subtract 150Kg, With Integrated side shifter, load capacity subtract 50Kg.

## 2.0-2.5 TON MAST SPECIFICATIONS & RATED CAPACITIES

Mast Type	Mast Name	Max.Fork Height(mm)	Load Capacity(kg)				Overall Height (mm)		Free Lift (mm)		Tilt Angle (Single)	Tilt Angle (Double)	
							Lowered	Extended		Without Backrest			With Bracket
								Without Backrest	With Backrest				
			FD20/ FD20T	FD20/ FD20T(Double)	FD25/ FD25T	FD25/ FD25T(Double)	2.0/2.5t		2.0/2.5t				
Wide View Mast	M300	3000	2000	2000	2500	2500	2055	3580	4070	100	100	6-12	6-12
	M330	3300	2000	2000	2500	2500	2205	3880	4370	100	100	6-12	6-12
	M400	4000	2000	2000	2450	2450	2605	4580	5070	100	100	6-6	*6-12
	M450	4500	1800	*1900	2000	*2400	2855	5080	5570	100	100	6-6	*6-12
	M470	4700	1450	*1850	1750	*2050	2955	5280	5770	100	100	6-6	*6-12
	M500	5000	1300	*1700	1600	*2100	3155	5580	6070	100	100	6-6	*6-6
2-Stage Full Free Wide View Mast	M550	5500	1100	*1500	1350	*1700	3405	6080	6570	100	100	3-6	*3-6
	M600	6000	950	*1300	1050	*1500	3655	6580	7070	100	100	3-6	*3-6
	FM300	3000	2000	2000	2500	2500	2070	3605	4068	1470	1007	6-12	6-12
	FM370	3700	2000	2000	2500	2500	2420	4255	4718	1800	1357	6-6	6-6
	FM400	4000	2000	2000	2500	2500	2670	4605	5068	2000	1607	6-6	*6-12
	TFM450	4500	1700	*1800	2000	*2300	2095	5107	5570	1498	1035	6-6	*6-6
3-Stage Full Free Wide View Mast	TFM470	4700	1600	*1750	1900	*2200	2145	5307	5770	1548	1085	6-6	*6-6
	TFM500	5000	1400	*1600	1500	*2000	2245	5607	6070	1648	1185	6-6	*6-6
	TFM550	5500	1100	*1500	1200	*1800	2445	6107	6570	1800	1385	3-6	*3-6
	TFM600	6000	800	*1400	850	*1600	2645	6607	7070	2000	1585	3-6	*3-6
	TFM650	6500	500	*1100	550	*1200	2895	7107	7570	2200	1835	3-6	*3-6
	TFM700	7000	100	*700	150	*800	3095	7607	8070	2300	2035	3-6	*3-6

Note: 1. With Separated Side shifter, load capacity subtract 200Kg, With Integrated side shifter, load capacity subtract 50Kg.

2. \* (Asterisk ) is for double front wheels model.

## 3.0-3.5 TON MAST SPECIFICATIONS & RATED CAPACITIES

Mast Type	Mast Name	Max.Fork Height(mm)	Load Capacity(kg)				Overall Height (mm)		Free Lift (mm)		Tilt Angle (Single)	Tilt Angle (Double)	
							Lowered	Extended		Without Backrest			With Bracket
								Without Backrest	With Backrest				
			FD30/ FD30T	FD30/ FD30T(Double)	FD35/ FD35T	FD35/ FD35T(Double)	3.0/3.5t		3.0/3.5t				
Wide View Mast	M300	3000	3000	3000	3500	3500	2070	3595	4070	100	100	6-12	6-12
	M330	3300	3000	3000	3500	3500	2220	3895	4370	100	100	6-12	6-12
	M370	3700	3000	3000	3400	3400	2420	4295	4770	100	100	6-6	6-6
	M400	4000	2950	2950	3250	3250	2620	4595	5070	100	100	6-6	*6-12
	M450	4500	2600	*2900	2900	*3000	2870	5095	5570	100	100	6-6	*6-12
	M470	4700	2500	2800	2800	2900	2970	5295	5770	100	100	6-6	*6-12
2-Stage Full Free Wide View Mast	M500	5000	2200	*2550	2400	*2800	3170	5595	6070	100	100	6-6	*6-6
	M550	5500	2000	*2400	2200	*2600	3420	6095	6570	100	100	3-6	*3-6
	M600	6000	1500	*2000	1600	*2400	3670	6595	7070	100	100	3-6	*3-6
	FM300	3000	3000	3000	3500	3500	2070	3590	4065	1382	907	6-12	6-12
	FM330	3300	3000	3000	3500	3500	2220	3940	4415	1532	1057	6-12	6-12
	FM370	3700	3000	3000	3500	3500	2420	4240	4715	1732	1257	6-6	6-6
3-Stage Full Free Wide View Mast	FM400	4000	3000	3000	3250	*3500	2670	4590	5065	1982	1507	6-6	*6-12
	TFM450	4500	2600	*2800	2800	*3200	2110	5200	5675	1422	947	6-6	*6-6
	TFM470	4700	2400	*2700	2500	*3000	2160	5400	5875	1472	997	6-6	*6-6
	TFM500	5000	2100	*2400	2300	*2800	2260	5700	6175	1572	1097	6-6	*6-6
	TFM550	5500	1650	*2250	1800	*2550	2460	6200	6675	1772	1297	3-6	*3-6
	TFM600	6000	1200	*2100	1300	*2300	2660	6700	7175	1972	1497	3-6	*3-6
3-Stage Full Free Wide View Mast	TFM650	6500	950	*1700	1050	*1800	2910	7200	7675	2200	1747	3-6	*3-6
	TFM700	7000	650	*1400	750	*1500	3110	7700	8175	2300	1947	3-6	*3-6

Note: 1. With Separated Side shifter, load capacity subtract 200Kg, With Integrated side shifter, load capacity subtract 50Kg.

2. \* (Asterisk ) is for double front wheels model.

# N Series Internal Combustion

## Diesel Forklift 1.5t - 3.5t Main Specifications

		UN							
General	1	Manufacturer	UN						
	2	Model	FD15T	FD18T	FD20T	FD25T	FD30T	FD35T	
	3	Power Type	Diesel	Diesel	Diesel	Diesel	Diesel	Diesel	
	4	Rated Load Capacity	Q(kg)	1500	1800	2000	2500	3000	3500
	5	Load Centre	C(mm)	500	500	500	500	500	500
Characteristic & Dimension	6	Rated Lift Height	H3(mm)	3000	3000	3000	3000	3000	3000
	7	Free Lift Height	H2(mm)	100	100	100	100	100	100
	8	Fork Size (L×W×T)	mm	920x120x35	920x120x35	1070x120x40	1070x120x40	1070x125x45	1070x125x45
	9	Mast Tilt Angle (F/R, α°/β°)	deg	6°/12°	6°/12°	6°/12°	6°/12°	6°/12°	6°/12°
	10	Fork Overhang (Wheel Center to Fork Face)	X1(mm)	409	409	479	479	484	484
	11	Rear Overhang	X2(mm)	470	470	520	520	595	635
	12	Ground Clearance (Bottom of Mast)	H7(mm)	110	110	130	130	145	145
	13	Length to Face of Fork (Without Fork)	L1(mm)	2285	2285	2660	2660	2700	2775
	14	Overall Width	B1(mm)	1082	1082	1150	1150	1225	1225
	15	Mast Lowered Height	H1(mm)	2025	2025	2055	2055	2070	2070
	16	Mast Extended Height (With Backrest)	H4(mm)	4055	4055	4070	4070	4070	4070
	17	Overhead Guard Height	H5(mm)	2160	2160	2215	2215	2235	2235
	18	Turning Radius (Outside)	Wa(mm)	2100	2100	2365	2365	2425	2500
	19	Min.Aisle width for pallets	mm	3700	3700	4120	4120	4180	4255
Performance	20	Travel Speed (No Load)	km/h	14.5	14.5	19	19	19	19
	21	Lifting Speed (Full Load)	mm/sec	560	560	510	510	430	400
	22	Lowering Speed (Full Load)	mm/sec	450	450	450	450	450	450
	23	Max.Drawbar Pull (Full Load/No Load)	KN	17(14.5)	17(14.5)	17(14.5)	17(14.5)	16(15.7)	16(15.7)
	24	Max.Gradeability (Full Load)	%	20	20	20	20	20	20
Tyre	25	Tyre (Front x 2)	mm	6.50-10-10PR	6.50-10-10PR	7.00-12-12PR	7.00-12-12PR	28x9-15-12PR	28x9-15-12PR
	26	Tyre (Rear x 2)	mm	5.00-8-10PR	5.00-8-10PR	6.00-9-10PR	6.00-9-10PR	6.50-10-10PR	6.50-10-10PR
Weight	27	Total Weight	kg	2860	2990	3385	3605	4460	4775
	28	Front Axle Weight Distribution (Full Load)	kg	3815	4120	4846	5494	6714	6997
	29	Rear Axle Weight Distribution (Full Load)	kg	545	720	538	610	746	777
	30	Front Axle Weight Distribution (No Load)	kg	1200	1170	1354	1442	1784	1910
	31	Rear Axle Weight Distribution (No Load)	kg	1660	1820	2031	2163	2676	2865
Power & Transmission	32	Battery	V/Ah	12/90	12/90	12/90	12/90	12/90	12/90
	33	Fuel Tank Capacity	L	50	50	50	50	50	50
	34	Operating Pressure (For Attachments)	Mpa	14.5	14.5	17.5	17.5	17.5	17.5

## Gasoline & LPG Forklift 1.5T - 3.5T Main Specifications

		UN							
General	1	Manufacturer	UN						
	2	Model	FG15T FGL15T	FG18T FGL18T	FG20T FGL20T	FG25T FGL25T	FG30T FGL30T	FG35T FGL35T	
	3	Power Type	LPG	LPG	LPG	LPG	LPG	LPG	
	4	Rated Load Capacity	Q(kg)	1500	1800	2000	2500	3000	3500
	5	Load Centre	C(mm)	500	500	500	500	500	500
Characteristic & Dimension	6	Rated Lift Height	H3(mm)	3000	3000	3000	3000	3000	3000
	7	Free Lift Height	H2(mm)	100	100	100	100	100	100
	8	Fork Size (L×W×T)	mm	920x120x35	920x120x35	1070x120x40	1070x120x40	1070x125x45	1070x125x50
	9	Mast Tilt Angle (F/R, α°/β°)	deg	6°/12°	6°/12°	6°/12°	6°/12°	6°/12°	6°/12°
	10	Fork Overhang (Wheel Center to Fork Face)	X1(mm)	409	409	479	479	484	484
	11	Rear Overhang	X2(mm)	470	470	520	520	595	635
	12	Ground Clearance (Bottom of Mast)	H7(mm)	110	110	130	130	145	145
	13	Length to Face of Fork (Without Fork)	L1(mm)	2285	2285	2660	2660	2700	2775
	14	Overall Width	B1(mm)	1082	1082	1150	1150	1225	1225
	15	Mast Lowered Height	H1(mm)	2025	2025	2055	2055	2070	2070
	16	Mast Extended Height (With Backrest)	H4(mm)	4055	4055	4070	4070	4070	4070
	17	Overhead Guard Height	H5(mm)	2160	2160	2215	2215	2235	2235
	18	Turning Radius (Outside)	Wa(mm)	2100	2100	2365	2365	2425	2500
	19	Min.Aisle width for pallets	mm	3700	3700	4120	4120	4180	4255
Performance	20	Travel Speed (No Load)	km/h	14.5	14.5	19	19	19	19
	21	Lifting Speed (Full Load)	mm/sec	560	560	510	510	430	400
	22	Lowering Speed (Full Load)	mm/sec	450	450	450	450	450	450
	23	Max.Drawbar Pull (Full Load/No Load)	KN	17(14.5)	17(14.5)	17(14.5)	17(14.5)	16(15.7)	16(15.7)
	24	Max.Gradeability (Full Load)	%	20	20	20	20	20	20
Tyre	25	Tyre (Front x 2)	mm	6.50-10-10PR	6.50-10-10PR	7.00-12-12PR	7.00-12-12PR	28x9-15-12PR	28x9-15-12PR
	26	Tyre (Rear x 2)	mm	5.00-8-10PR	5.00-8-10PR	6.00-9-10PR	6.00-9-10PR	6.50-10-10PR	6.50-10-10PR
Weight	27	Total Weight	kg	2860	2990	3385	3605	4460	4775
	28	Front Axle Weight Distribution (Full Load)	kg	3815	4120	4846	5494	6714	6997
	29	Rear Axle Weight Distribution (Full Load)	kg	545	720	538	610	746	777
	30	Front Axle Weight Distribution (No Load)	kg	1200	1170	1354	1442	1784	1910
	31	Rear Axle Weight Distribution (No Load)	kg	1660	1820	2031	2163	2676	2865
Power & Transmission	32	Battery	V/Ah	12/90	12/90	12/90	12/90	12/90	12/90
	33	Fuel Tank Capacity	L	50	50	50	50	50	50
	34	Operating Pressure (For Attachments)	Mpa	14.5	14.5	17.5	17.5	17.5	17.5

## ENGINE

### XINCHAI

Model:C490BPG -37 (EUIII)  
 Rated output:36.8KW/2650RPM  
 Rated torque:156N.M/1800RPM  
 No.of cylinder:4  
 Bore x Stroke:90x105MM  
 Displacement:2.396L

### ISUZU

Model:C240NKFC-01 (EUIII)  
 Rated output:35.4KW/2500RPM  
 Rated torque:139N.M/1800RPM  
 No.of cylinder:4  
 Bore x Stroke:86\*102MM  
 Displacement:2.396L

### MITSUBISHI

Model:S4S (EUIII)  
 Rated output:35.3KW/2250RPM  
 Rated torque:177N.M/1700RPM  
 No.of cylinder:4  
 Bore x Stroke:94x120MM  
 Displacement:3.331L

### GCT

Model:GK25  
 Rated output:44.2KW/2500RPM  
 Rated torque:186.2N.M/1600RPM  
 No.of cylinder:4  
 Bore x Stroke:92\*93MM  
 Displacement:2.472L

### KUBOTA

Model:V2403-CR-TE5 (EUV)  
 Rated output:48.6(65.1)KW/2700RPM  
 Rated torque:198.5N.M/1600RPM  
 No.of cylinder:4  
 Bore x Stroke:87.0\*102.4MM  
 Displacement:2.434L

